

ArcMap 10.5 – Web Map Service (WMS)

Introduction

Accessing DELWP's Image Web Server via Web Map Services (WMS) in ArcMap 10.5 is an alternative to accessing imagery via the ECW plug-in (which has caused some issues for some users in the past). You need to be a registered user before you can access the Image Web Server. Refer to the Username / Password section at the end of this information sheet to register as an authorised user of these services.

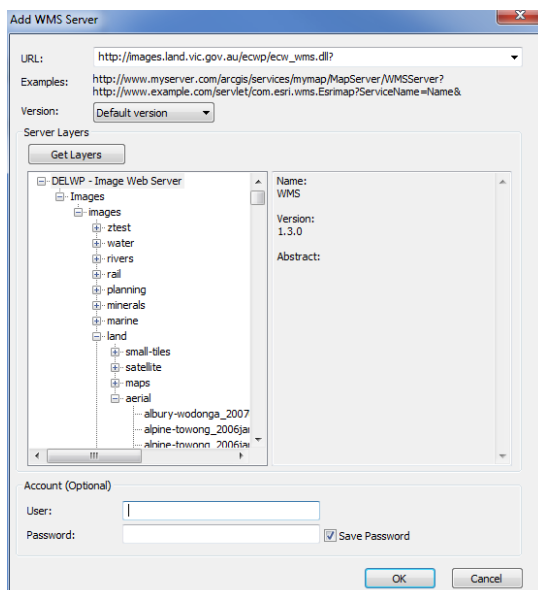
Connecting to a Web Map Service

- Open ArcCatalog
- Double click or expand the GIS Servers entry from the Catalog Tree
- Double click the Add WMS Server option

Copy and paste the following into the URL text window of the Add WMS Server menu

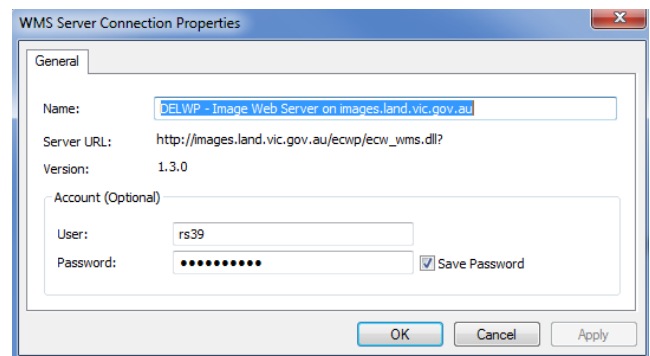
<https://images.maps.vic.gov.au/erdas-iws/ogc/wms/?SERVICE=WMS&request=getcapabilities>

- Click the Get Layers button to display a list of layers available for the service. If you don't see any layers, you have most likely entered the URL incorrectly.
- Click the OK button. Don't enter your username and password at this point as ArcCatalog will not remember it.



Due to a known bug in ArcMap 10.5 you will need to enter your username and password as follows;

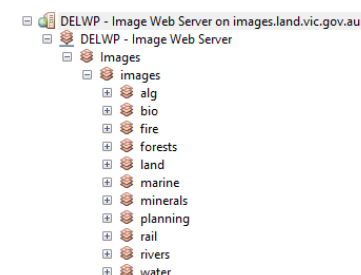
- right click on the newly added service in the ArcCatalog Tree and then select the Properties menu option.
- enter your user name and password again in the menu provided. Be sure to tick the Save Password box.
- then click the OK button.



Add an Image quickly to ArcMap

- In ArcMap
- Open the Catalog tab
- Expand the IWS option under GIS servers

DELWP - Image Web Server on images.land.vic.gov.au



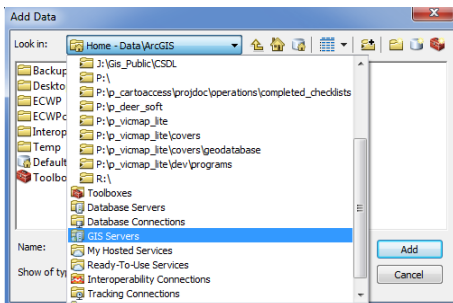
- Drag the image required to Table of Contents panel
- Tick on layer visibility to display image

Loading an Image into ArcMap

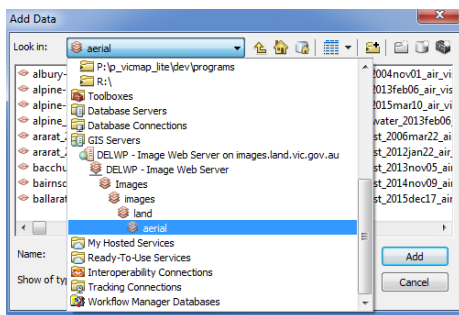
- Open ArcMap
- double click the Layers entry in your table of contents.
- in the resulting Data Frame Properties pop-up, select the Coordinate System tab.
- navigate to and select the coordinate system required.
- click the OK button.

Now add the image of choice to ArcMap, selecting an image of the same coordinate system as just set in your data frame (refer to the image name for its coordinate system).

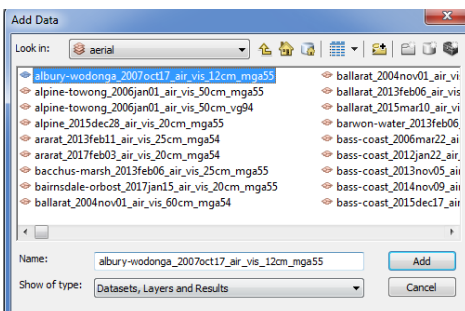
- click on the Add Data button  on the Standard Tool Bar. Select the "Look in" drop down and select GIS Server



- double click on DELWP - Image Web Server on images.land.vic.gov.au
- double click on the DELWP - Image Web Server



option and browse to the required directory



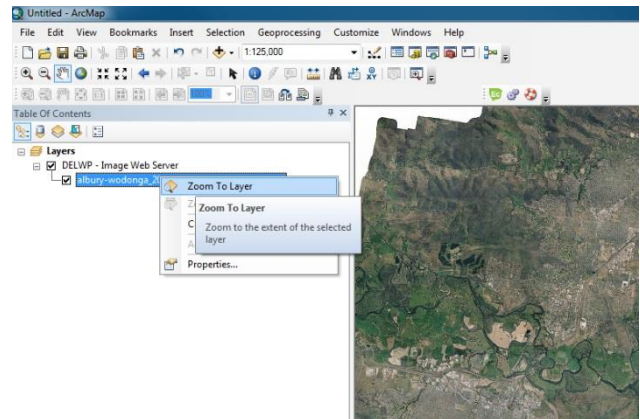
- select the required image and then click the Add button
- The image will appear in the ArcMap table of contents.
- click on the visibility tick box to view the image in the Map Window.
The image should now appear in your ArcMap map window. If the image doesn't appear use the zoom to layer option by right clicking the image name with the right mouse button and selecting Zoom to Layer

More Information

Additional information is available from the [IWS Technical Page](#).

Image Footprints

The image footprints layer is a spatial index of all



georeferenced images stored on the Image Web Server. The layer contains information about the image file which will support basic searching for appropriate images.

Internal users can access the footprints layer via ArcGIS as an ESRI file geodatabase via the VSDL on:

J:\Gis_Public\CSDL\RASPLAT.gdb\IWSFOOTPRINT

External users can order and download the footprints layer via the [Spatial Datamart](#), which supports both MapInfo mid/mif and ESRI shp formats.

Note: At present the Spatial Datamart does not support the MapInfo tab format for the footprints layer. MapInfo users can extract the layer via the mid/mif format.

List of Accessible Imagery

It is now possible to view and save a list of Image Web Server imagery, so that you can differentiate between all the imagery on the image web server and those that you have access to.

- a. Go to the [Image Web Server Administration Interface](#) (click Yes on the Security Alert pop-up)
- b. Login using your IWS username and password
- c. Select the View Permissions menu option (top left of the page)
- d. The result will be a page that displays a list of Users Images. This is a list of images that you have been granted access to (in accordance with your data license agreement).
- e. Tick the "Include All Available Resources" box to list all the other images on the IWS which you do not have access to.
- f. Save the list in either TXT or PDF formats by selecting the appropriate button.
- g. If you would like to purchase a license to view other images or if you think there is a discrepancy between your license agreement and what you have access to please contact the GIS.helpdesk@delwp.vic.gov.au

Username / Password

Viewing imagery via the Image Web Server requires a user name and password. If you don't have a username and password for the Image Web Server you will need to apply for one. Refer to the [Register a User](#) information sheet for detailed instructions.

Forgotten your Password?

Click here to [reset your password](#).

Image Web Server Contact Details

The Information Services Division (DELWP) manages the IWS. Please address any feedback or queries to GIS.Helpdesk@delwp.vic.gov.au

© The State of Victoria Department of Environment, Land, Water and Planning 2020



This work is licensed under a Creative Commons Attribution 4.0 International licence. You are free to re-use the work under that licence, on the condition that you credit the State of Victoria as author. The licence does not apply to any images, photographs or branding, including the Victorian Coat of Arms, the Victorian Government logo and the Department of Environment, Land, Water and Planning (DELWP) logo. To view a copy of this licence, visit <http://creativecommons.org/licenses/by/4.0/>

Disclaimer

This publication may be of assistance to you but the State of Victoria and its employees do not guarantee that the publication is without flaw of any kind or is wholly appropriate for your particular purposes and therefore disclaims all liability for any error, loss or other consequence which may arise from you relying on any information in this publication.

Accessibility

If you would like to receive this publication in an alternative format, please telephone the DELWP Customer Service Centre on 136186, email customer.service@delwp.vic.gov.au, or via the National Relay Service on 133 677 www.relayservice.com.au. This document is also available on the internet at www.delwp.vic.gov.au.