

Introduction

DELWP recommends MapInfo Professional (version 8.5 or greater) users access the Image Web Server as a Web Map Service (WMS). Refer to the Useful Tips section of this information sheet for details. Versions of MapInfo less than 8.5 do not support WMS security which is essential when integrating with the Image Web Server.

View available images via WMS

- Choose the File > Open Web Service > Open WMS... menu options.
- Select the Servers... button
- Then the Add... button
- In the resulting WMS Server Information menu

For Server URL enter –
`https://images.maps.vic.gov.au/erdas-iws/ogc/wms/?SERVICE=WMS&request=getcapabilities`

For Description: enter – Victorian Government Image Web Server

Then click OK

- Now set this entry as the default by clicking the Set Default button
- Then click OK
- Now select the images to be viewed from the WMS Layers: list and then the Add>> button to add them to the right hand menu window
- Enter a Table filename: by navigating to the C:/TEMP directory, entering the name and clicking the Save button
- Under the Preferred View: pull down select the appropriate mapper window option
- Then click OK to add the image to the Mapper window
- When adding an image for the first time, you will need to enter in your Username/Password via the

Authentication menu. (Refer to section Username Password below.)

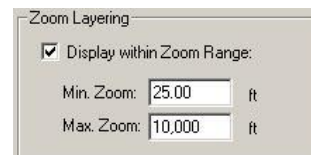
Please Note: Some images on the Image Web Server are not georeferenced and therefore may not be suitable for viewing in MapInfo. These images will contain a dpi value in the file name rather than a coordinate systems value (eg mga54, mga55, vg94 or dd94).

Useful Tips

Blank Map Window

If the Map Window appears blank then you may need to change the display settings to see the image.

- Right click in the Map Window.
- Select Layer Control...
- Click on Display
- Then the Zoom Layering section de-check Display within Zoom Range:



- Then click OK and again in the next window.
- The Image will then appear.

Loading Images into the same Map Window

- In the Open WMS
- Under the Preferred View: pull down select the Current Mapper option
- Now load multiple images

Viewing Vigrid94 images

To view images in the Vicgrid94 coordinate system your MapInfo projection file must be updated with the VicGrid94 EPSG number as follows;

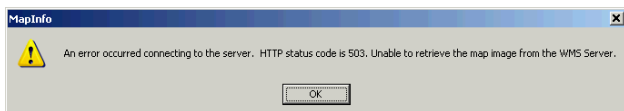
- Navigate to your MapInfo installation directory. The default path is: C:\Program Files\MapInfo\Professional
- Then open the MAPINFO.PRJ file in Wordpad.
- Then via the Edit > Find menu options, search for "Vicgrid94"
- Add the EPSG Number \p102171 as follows; "VicGrid94 (GDA94)\p102171",3, 116, 7, 145, -37, -36, -38, 2500000, 2500000
- Save the file and exit
- Now go to MapInfo and add a *vg94 image as a WMS (as described in View available images via WMS section of this document)

Please note the following points when using ECW in MapInfo;

- Need to set the projection of the map window to match that of the image, new data (point, line or polygon) will be re-projected to match the image projection
- If you move the image TAB file you MUST also move the ALG file with the TAB file (if it exists)

Settings

If you experience delays/timeout in display of imagery and you receive an error like this one;



Change the Proxy Server Settings from the default (Use System Settings) to Use Direct Connection as follows:

- Select the MapInfo Options > Preferences menu options

- In the resulting pop up window click on the Web Services button.
- In the resulting pop up window select the Use Direct Connection radio button
- Click the OK button
- Click the OK button again.

Username Password

Viewing imagery via the Image Web Server requires a user name and password. If you don't have a username and password for the Image Web Server you will need to apply for one. Refer to the [Register a User](#) information sheet for detailed instructions.

Forgotten Your Password?

Click here to [reset your password](#).

More Information

Additional information is available from the [IWS Technical Page](#)

Image Footprints

The image footprints layer is a spatial index of all georeferenced images stored on the Image Web Server. The layer contains information about the image file which will support basic searching for appropriate images. The footprints layer can be ordered from [Spatial Datamart](#).

Note: At present the Spatial Datamart does not support the MapInfo output format for the footprints layer. MapInfo users can extract the layer via the mid/mif format.

List of Available Imagery

It is now possible to view and save a list of Image Web Server imagery, so that you can differentiate between all the imagery on the image web server and those that you have access to.

- Go to the [Image Web Server Administration Interface](#) (click Yes on the Security Alert pop-up)
- Login using your IWS username and password
- Select the View Permissions menu option (top left of the page)
- The result will be a page that displays a list of Available Images. This is a list of images that you have been granted access to according to an agreed data license.

- e. Tick the Include all available images box to list all the other images on the IWS which you do not have access to.
- f. Save the list in either TXT or PDF formats by selecting the appropriate button.
- g. Contact ISD if you would like to purchase a license to view the other images or if you think there is a discrepancy between your license agreement and what you have access to.

The Information Services Division (DELWP) manages the IWS. Please address any feedback or queries to GIS.Helpdesk@delwp.vic.gov.au

© The State of Victoria Department of Environment, Land, Water and Planning 2019



This work is licensed under a Creative Commons Attribution 4.0 International licence. You are free to re-use the work under that licence, on the condition that you credit the State of Victoria as author. The licence does not apply to any images, photographs or branding, including the Victorian Coat of Arms, the Victorian Government logo and the Department of Environment, Land, Water and Planning (DELWP) logo. To view a copy of this licence, visit <http://creativecommons.org/licenses/by/4.0/>

Disclaimer

This publication may be of assistance to you but the State of Victoria and its employees do not guarantee that the publication is without flaw of any kind or is wholly appropriate for your particular purposes and therefore disclaims all liability for any error, loss or other consequence which may arise from you relying on any information in this publication.

Accessibility

If you would like to receive this publication in an alternative format, please telephone the DELWP Customer Service Centre on 136186, email customer.service@delwp.vic.gov.au, or via the National Relay Service on 133 677 www.relayservice.com.au. This document is also available on the internet at www.delwp.vic.gov.au.