

Image Web Server

Trouble Shooting in ArcMap10

Sheet 5.0a
December 2013

Introduction

This is a list of known issues and their workarounds.

Clearing the Cache

Some problems with ArcMap performance when accessing imagery can be resolved by clearing the cache as follows;


- Select the Customise > ArcMap Options... menu options
- Select the *Data Interoperability* tab in the resulting pop up
- Click on the *Clear Cache* button
- Select the *Display Cache* tab
- Click on the *Clear Cache* button

Viewing vector and image layers together

The ArcGIS 10 version of the ECWP plug-in can use the Image Web Server to dynamically re-project the requested image into the co-ordinate system of the ArcMap map frame. This functionality requires that both the co-ordinate system of the image and the map frame are correctly defined.

If problems are encountered aligning the image with the vector data in the map the recommended solution is to change the co-ordinate system of the map to match the datum and projection properties of the image. This avoids the Image Web Server attempting to re-project the image.

The co-ordinate system of the image is embedded as the last component in the image name. It will have one of three values: *vg94*, *mga54* or *mga55*. To set the co-ordinate system of the map frame to match the image:

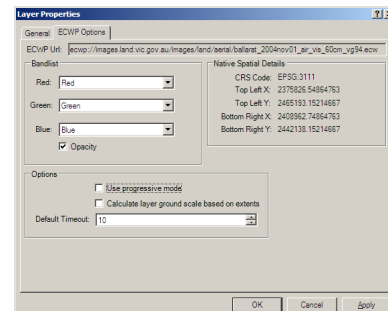
- right click on  in the Table of Contents frame and then select the *Properties* menu option;
- click on the *Coordinate System* tab.
- Select the GDA94 co-ordinate system from the *Favorites* or *Predefined* folder that matches the value at the end of the image name.
- click 'OK' to apply and close the *Data Frame Properties* window.

Printing vector and image layers together

You may find that IWS imagery appears on the screen, but does not appear in any maps that you print or export to PDF.

It is thought this problem may be an operating system issue related to available memory. Some suggestions to avoid this issue are:

- Avoid data frame rotation. There seem to some memory issue with data frame rotation and raster datasets. If possible, make the data frame coordinate system the same as the raster dataset. Refer to the *Viewing vector and image layers together* of this sheet.
- Check the ECWP Properties as follows;
 - right-click on the image in your ArcMAP Table of Contents
 - select the *Properties* menu option
 - select the *ECWP Options* tab
 - untick the *Use progressive mode* tick box.
 - click the *OK* button



- Check the ArcMap File – Export Map options;
 - At A0 and A1 PDF size 300dpi/normal quality seems to be the best combination of resolution and quality that will reliably include imagery in the output PDF;
 - At A3 and A4 PDF size 600dpi/normal quality is the best quality product.
- PDF printing can be achieved using the ArcPy *Export to PDF*, printing module. This can be run outside ArcMap and will save display memory.

Image Web Server Contact Details

The Information Services Division (DEPI) is managing the IWS. Please address any feedback or queries to GIS.Helpdesk@depi.vic.gov.au

