

Introduction

DELWP's Image Web Server can be accessed via Web Map Services (WMS) in ArcGIS Pro. You need to be a registered user before you can access the Image Web Server. Refer to the Username / Password section at the end of this information sheet to register as an authorised user of these services.

Adding a WMS Server Connection

- From the ArcGIS Pro start screen open any project or "Start without a template" and then open a New Map

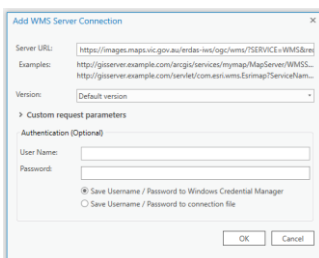
- Click the **Insert** menu then click **Connections**

- Select **New WMS Server**

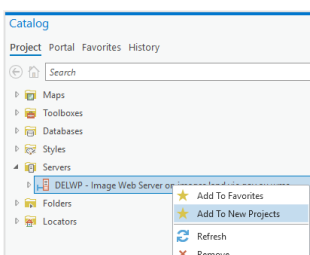
Copy and paste the following into the URL text window of the Add WMS Server menu

<https://images.maps.vic.gov.au/erdas-iws/ogc/wms/?SERVICE=WMS&request=getcapabilities>

- DO NOT** Enter your username and password
- Select the "Save Username / Password to Windows Credential Manager" option
- Click the OK button.

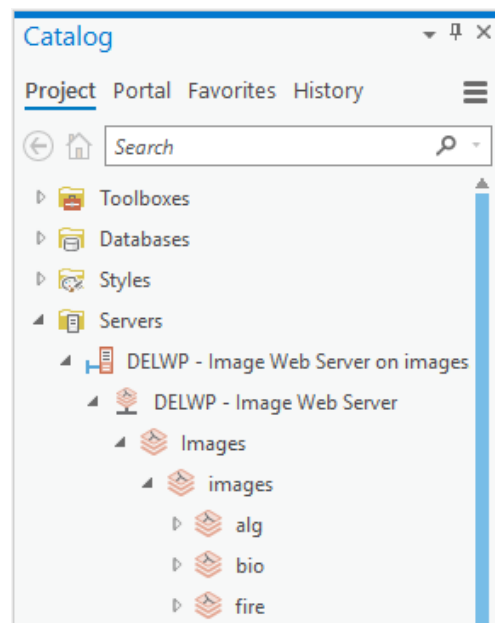


- Right-click on the connection and select **Add To New Projects**. This will ensure the IWS is available from the Catalog in the future.

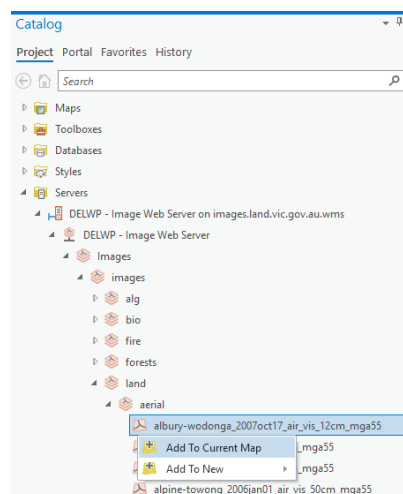


Loading an Image into ArcGIS Pro

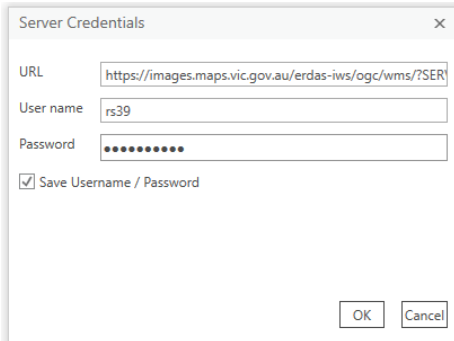
- From the Catalog window, expand the **Servers** folder
- Double click on the **DELWP - Image Web Server** option and browse to the required directory



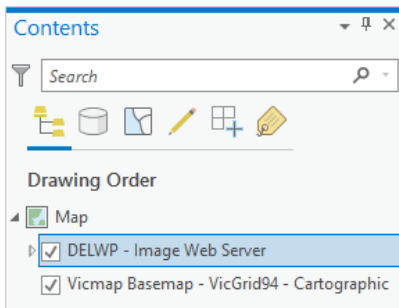
- To add the image to your map drag and drop the image name, or right-click "Add to Current Map"



- d. When prompted for your Username and Password, enter them and check “Save Username / Password”, then click OK.



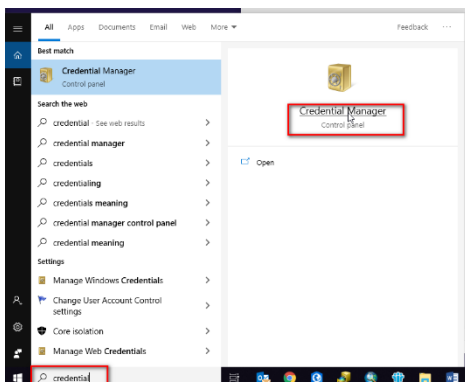
- e. The image should then be loaded into your map. If it does not appear, ensure it is not hidden behind the Vicmap Basemap in the Drawing Order



Trouble shooting: Windows 10 users

If you are a Windows 10 user and you are experiencing problems with displaying an image, you can try removing the images.maps.vic.gov.au entry from your windows credentials. You should confirm that you are a registered IWS user and you have permissions to display the image (you are interested in) before you perform these steps.

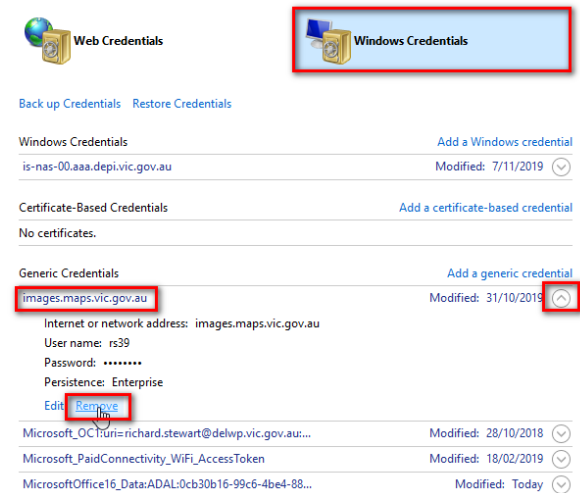
- a. Type credential into Cortana and select Credential manager



- b. Select Windows Credentials
- c. Expand the images.maps.vic.gov.au entry
- d. Select remove

Manage your credentials

View and delete your saved logon information for websites, connected applications and networks.



- e. Now repeat the steps outlined under the heading “Adding a WMS Server Connection”

Image Footprints

The image footprints layer is a spatial index of all georeferenced images stored on the Image Web Server. The layer contains information about the image file which will support basic searching for appropriate images.

Internal users can access the footprints layer via ArcGIS as an ESRI file geodatabase via the VSDL on:

J:\Gis_Public\CSDL\RASPLAT.gdb\IWSFOOTPRINT

External users can order and download the footprints layer via the [Spatial Datamart](#), which supports both MapInfo mid/mif and ESRI shp formats.

Note: At present the Spatial Datamart does not support the MapInfo tab format for the footprints layer. MapInfo users can extract the layer via the mid/mif format.

List of Accessible Imagery

It is now possible to view and save a list of Image Web Server imagery, so that you can differentiate between all the imagery on the image web server and those that you have access to.

- a. Go to the [Image Web Server Administration Interface](#) (click Yes on the Security Alert pop-up)

- b. Login using your IWS username and password
- c. Select the View Permissions menu option (top left of the page)
- d. The result will be a page that displays a list of Users Images. This is a list of images that you have been granted access to (in accordance with your data license agreement).
- e. Tick the “Include All Available Resources” box to list all the other images on the IWS which you do not have access to.
- f. Save the list in either TXT or PDF formats by selecting the appropriate button.
- g. Username / Password

Viewing imagery via the Image Web Server requires a user name and password. If you don't have a username and password for the Image Web Server you will need to apply for one. Refer to the [Register a User](#) information sheet for detailed instructions.

Forgotten your Password?

Click here to [reset your password](#).

Image Web Server Contact Details

The Information Services Division (DELWP) manages the IWS. Please address any feedback or queries to GIS.Helpdesk@delwp.vic.gov.au

© The State of Victoria Department of Environment, Land, Water and Planning 2019



This work is licensed under a Creative Commons Attribution 4.0 International licence. You are free to re-use the work under that licence, on the condition that you credit the State of Victoria as author. The licence does not apply to any images, photographs or branding, including the Victorian Coat of Arms, the Victorian Government logo and the Department of Environment, Land, Water and Planning (DELWP) logo. To view a copy of this licence, visit <http://creativecommons.org/licenses/by/4.0/>

Disclaimer

This publication may be of assistance to you but the State of Victoria and its employees do not guarantee that the publication is without flaw of any kind or is wholly appropriate for your particular purposes and therefore disclaims all liability for any error, loss or other consequence which may arise from you relying on any information in this publication.

Accessibility

If you would like to receive this publication in an alternative format, please telephone the DELWP Customer Service Centre on 136186, email customer.service@delwp.vic.gov.au, or via the National Relay Service on 133 677 www.relayservice.com.au. This document is also available on the internet at www.delwp.vic.gov.au.